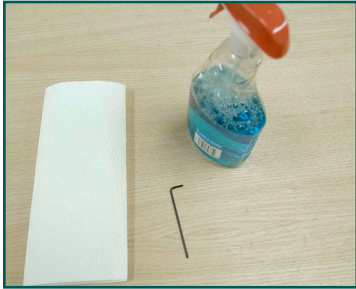




# BLINDS + GLASS

## OPERATOR REPLACEMENT INSTRUCTIONS FOR 1" AND 7/8" UNITS

### TOOLS REQUIRED



- New operator
- Window cleaner
- Cleaning cloth
- 1.5mm allen wrench

### INSTALLATION VIDEOS



Scan to see installation videos or visit [odl.com/blinds](http://odl.com/blinds)

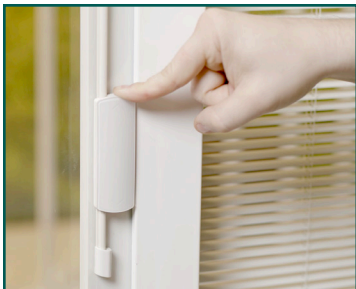
### VERIFY CORRECT OPERATOR



Verify the new operator is the same size and shape as the current operator. If it does not match please visit [odl.com/contact-us](http://odl.com/contact-us) or call customer service at 1-866-472-0042.

**CAUTION: Operators contain rare earth magnets and have strong attraction properties. Do not allow operators to come into proximity to one another. If operators become attached, slide them away from each other. Do not try to pry them apart.**

### REMOVE EXISTING OPERATOR & TRACK END CAP



**STEP 1:** Move blinds to the fully raised position  
Raise blinds completely by moving the operator to the bottom of the track.



**STEP 2:** Remove the end cap set screw

A) Using the 1.5mm allen wrench back out the set screw in the end cap. Once this screw is loosened remove end cap from track.

B.) Hold the operator and push down until magnetic force is overcome (blind will drop). Slide the operator down and off the track.

Repeat this step for the top end cap and operator on your dual operator unit, slide the operator up off the track.\*

**\*NOTE: If you have a single operator system, you will not have a second tilt operator or intermediate stop. These instructions are specific to the dual or double operator.**



**STEP 3:** Clean the glass  
Once the end cap(s) and operator(s) are removed, clean the glass around the track with window cleaner and cleaning cloth.

# INSTALL NEW OPERATOR



## STEP 1: Slide operator

Slide the new operator onto the track with operator placed between the track and sash.

**NOTE: For a dual operator unit, you will need to slide one operator from the top of the track and the second from the bottom.**



## STEP 2: Engage operator

A) To engage the bottom operator with the internal magnets in the door, slide the operator from bottom to top of the track.

B.) As you move up towards the top, you will meet some resistance two (2) separate times. You will need to apply upward force to help “snap” the operator into position. You will hear a click sound. The second resistance will require more force to “snap” the operator into position. You will hear a second click sound.

C.) Once you have slid the operator to the top of the track and experienced two separate clicks the operator is engaged

**NOTE: Repeat this process for the top operator of a dual operator unit. Noting that the top operator will only experience one (1) click before engagement.**

**IMPORTANT: You must slide the operator to the very top and hear 2 clicks to fully engage the magnets.**



## STEP 3: Reattach end cap

A) Place the end caps on the track with the set screw facing the sash, push the end cap until you meet resistance.

B) Tighten the set screw until flush using a 1.5mm allen wrench.



## STEP 4: Test raise, lower and tilt functions

A) Test the raise, lower and tilt functions by moving the operator from the top to the bottom to close and open the blind.

B) Lower the blind halfway. Check the tilt feature by moving the operator up and down slightly. If the track and operator are aligned properly and the magnet is engaged appropriately, the blind should raise, lower and tilt as originally designed.



## STEP 5: Clean

Finally, using the window cleaner and cleaning cloth, clean the glass around the track and operator to remove any fingerprints.