



BLINDS + GLASS

TRACK AND OPERATOR REPLACEMENT INSTRUCTIONS FOR 1" AND 7/8" UNITS



TOOLS REQUIRED:

- New track assembly*
- Putty knife
- Utility blade scraper
- Window cleaner or rubbing alcohol
- Cleaning cloth
- Masking or painter's tape
- 1.5mm allen wrench



Scan to see installation videos or visit odl.com/blinds

*New track assembly includes a track with adhesive tape, end caps, and an intermediate stop. If your unit has a single operator there will not be an intermediate stop.

VERIFY CORRECT OPERATOR AND TRACK

OPERATOR: Verify the new operator is the same size and shape as the current operator. If it does not match please visit odl.com/contact-us or call customer service at 1-866-472-0042.

TRACK: Verify that the intermediate stop of the replacement track is in the same orientation as the current track, and that the overall length of both tracks are the same. Again, single operator units will not have an intermediate stop on the track.



CAUTION: Operators contain rare earth magnets and have strong attraction properties. Do not allow operators to come into proximity to one another. If operators become attached, slide them away from each other. Do not try to pry them apart.

REMOVE EXISTING OPERATOR & TRACK END CAP



STEP 1: Move blinds to the fully raised position

Raise blinds completely by moving the operator to the bottom of the track.



STEP 2: Remove the end cap set screw

A) Using the 1.5mm allen wrench back out the set screw in the end cap. Once this screw is loosened remove end cap from track.

B.) Hold the operator and push down until magnetic force is overcome (blind will drop). Slide the operator down and off the track.

Repeat this step for the top end cap and operator on your dual operator unit, slide the operator up off the track.*

***NOTE: If you have a single operator system, you will not have a second tilt operator or intermediate stop. These instructions are specific to the dual or double operator.**

OUTLINE CURRENT TRACK



STEP 1: Outline top and side edge

Using masking or painters' tape, horizontally outline the top edge of the track and the vertical surface of the track toward the inside of the door, stopping at the intermediate stop for a dual operator.



STEP 2: Run tape down track

Apply another long piece below the intermediate stop. Once the tape is applied, smooth the tape on the glass by running your thumb up, down and across the tape.

NOTE: If this is a single operator, run the tape all the way down the track.

REMOVE EXISTING TRACK



STEP 1: Remove the track

Place the putty knife at the bottom and slightly under the track. Slide the putty knife up and under the track and gently pry the track away from the glass, working your way to the top of the track. Continue removing through the intermediate stop to the top.



STEP 2: Clean the glass

Scrape off the adhesive residue using a utility blade scraper. To aid in ease of adhesive removal, rubbing alcohol or window cleaner can be applied. Allow about 1 to 2 minutes for the solution to soften the adhesive, avoiding getting the tape wet or removing it. Ensure that all the adhesive residue is removed and that the glass surface is fully dry.

NOTE: Be careful not to nick or gauge the door with the utility blade.

INSTALL NEW TRACK ASSEMBLY



STEP 1: Start removing adhesive

Grip the new track assembly at the top and start pulling off the tape backing on the back of the track to expose a couple inches of the adhesive.



STEP 2: Line up track with tape

Align the top of the track with the horizontal edge of the masking tape. Remove the tape backing, and apply to the glass, lining the track up to the masking tape edge and pressing the track to the glass.



STEP 3: Continue attaching track

Work your way from top to bottom, ensuring that you have the track straight and aligned with the previously applied tape as your guide. We recommend peeling the backing slowly away from the tape, removing 6-8 inches at a time, and working in small sections until you reach the bottom of the track. Once it is fully applied, ensure the new track is firmly attached to the glass along the total length of the track.



STEP 4: Remove the tape

Starting at one end, remove the tape from the glass.

INSTALL NEW OPERATOR



STEP 1: Slide operator

Slide the new operator onto the track with operator placed between the track and sash.



NOTE: For a dual operator unit, you will need to slide one operator from the top of the track and the second from the bottom. The larger of the two operators should be installed from the bottom, and the smaller operator should be installed from the top.



STEP 2: Engage operator

A.) To engage the bottom operator with the internal magnets in the door, slide the operator from bottom to top of the track.

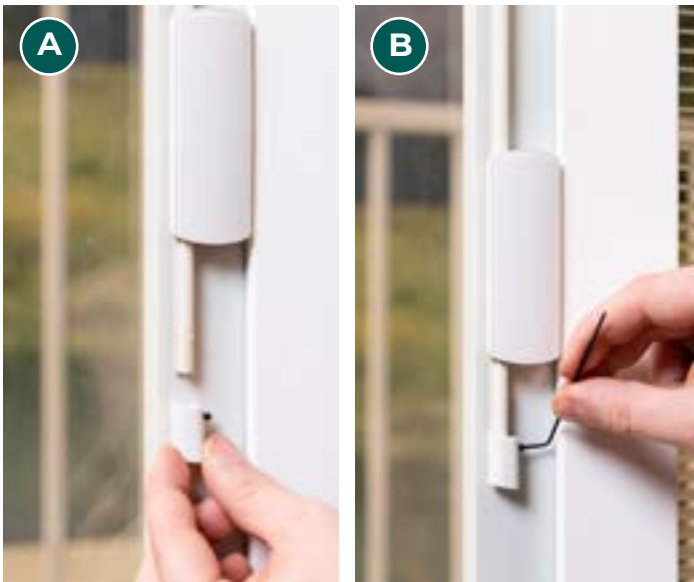
B.) As you move up towards the top, you will meet some resistance two (2) separate times. You will need to apply upward force to help “snap” the operator into position. You will hear a click sound. The second resistance will require more force to “snap” the operator into position. You will hear a second click sound.



C.) Once you have slid the operator to the top of the track and experienced two separate clicks the operator is engaged.

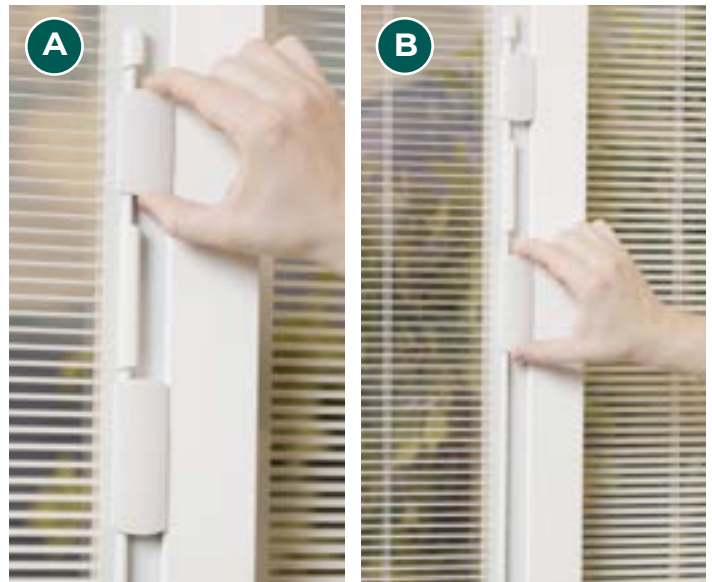
NOTE: Repeat this process for the top operator of a dual operator unit. Note that 2 or 3 magnet operators will only click once before engagement, and 4 or 5 magnet operators will click twice.

IMPORTANT: You must slide the operator to the very top and hear 2 clicks to fully engage the magnets.



STEP 3: Reattach end cap

- A) Place the end caps on the track with the set screw facing the sash, push the end cap until you meet resistance.
- B) Tighten the set screw until flush using a 1.5mm allen wrench.



STEP 4: Test raise, lower and tilt functions

- A) Test the raise, lower and tilt functions by moving the operator from the top to the bottom to close and open the blind.
- B) Lower the blind halfway. Check the tilt feature by moving the operator up and down slightly. If the track and operator are aligned properly and the magnet is engaged appropriately, the blind should raise, lower and tilt as originally designed.



STEP 5: Clean

Finally, using the window cleaner and cleaning cloth, clean the glass around the track and operator to remove any tape residue or fingerprints.



215 E ROOSEVELT AVE
ZEELAND, MI 49464
800.253.3900 · odl.com

odl.com/blinds
224176 (06/24)